

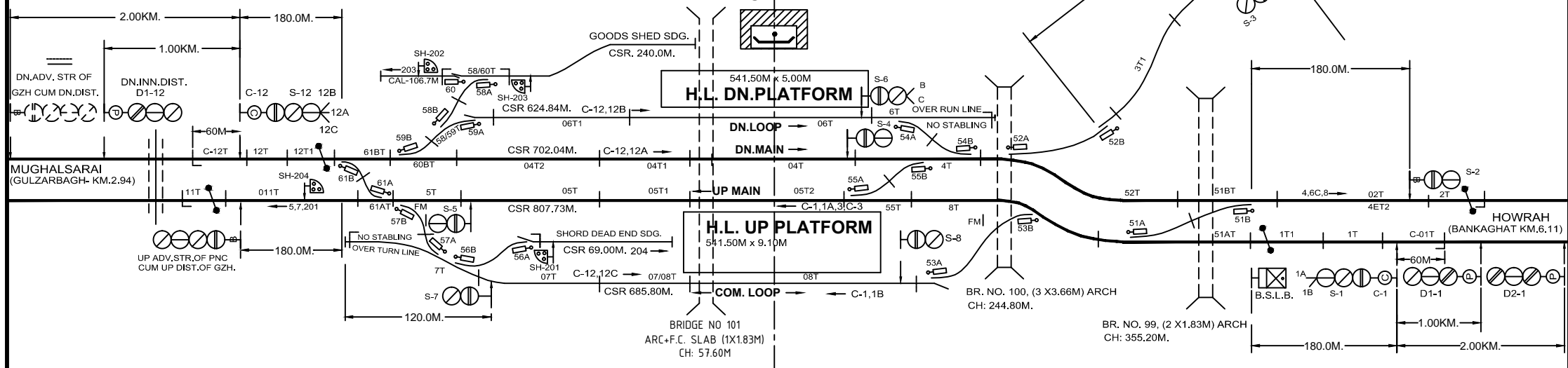
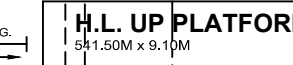
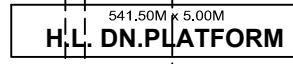
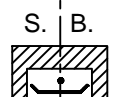
PATNA SAHEB (PNC)



L-X'ING 71/C
C-CLASS
AT KM.534.81

PATNA GHAT

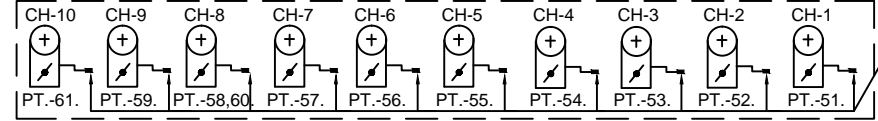
☉ OF STATION BUILDNG
KM.533.64(FROM HWH)



IN PANEL

- MAIN SIGNAL BUTTONS:- 1,2,3,4,5,6,7,8,11,12.
- C-ON SIGNAL BUTTONS:- C-1,C-3,C-12.
- POINTS CONTROL BUTTONS:- 51,52,53,54,55,56,57,58,59,60,61.
- CRANK HANDLE CONTROL BUTTONS:-CH-1,CH-2,CH-3,CH-4,CH-5
CH-6,CH-7,CH-8,CH-9,CH-10.
- SHUNT SIGNAL BUTTONS :- 201,202,203,204.
- SPARE BUTTON :- 9,10.

IN PANEL ROOM



CRANK HANDLE WELDED WITH KEY

- NOTE:-**
1. ABSOLUTE BLOCK SYSTEM OF WORKING WITH GULZARBAGH AND BANGKAGHAT.
 2. ALL ANGLE OF 'X'-ING ARE 1 IN 12 EXCEPT AS MENTION IN SIP.
 3. CONTROL TELEPHONE PROVIDED IN PANEL ROOM.
 4. "ONE TRAIN ONLY" SYSTEM OF WORKING BETWEEN PATNA SAHEB & PATNAGHAT .
 5. LED SIGNAL PROVIDED FOR ALL MAEL SIGNALS.
 6. UFSBI BLOCK PANEL WITH SSDAC WORKING BETWEEN PNC - BKG.
 7. UFSBI BLOCK PANEL WITH SSDAC WORKING BETWEEN PNC - GZH.
 8. .SYMBOL OF UFSBI & DLBI , SSDAC & AXLE COUNTER IS UNIFORM . SO NO CHANGE MADE IN SYMBOL OF S-2, 2T, S-11 & 11T, 1T1, 12T1.

EAST CENTRAL RAILWAY DANAPUR DIVISION	PANEL SIGNALLING PLAN MAEL, STD-III, CLASS-'B'.			PATNA SAHEB (PNC)	SR. NO. ML-27.
	SR.DSTE/ECR/DNR	ASTE/ECR/DNR	SSE/DRG/DNR		ECR/SIP/DNR/099/2008 ALT-IV