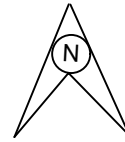


# SARSI STATION

## Lkj I h LVŠ ku



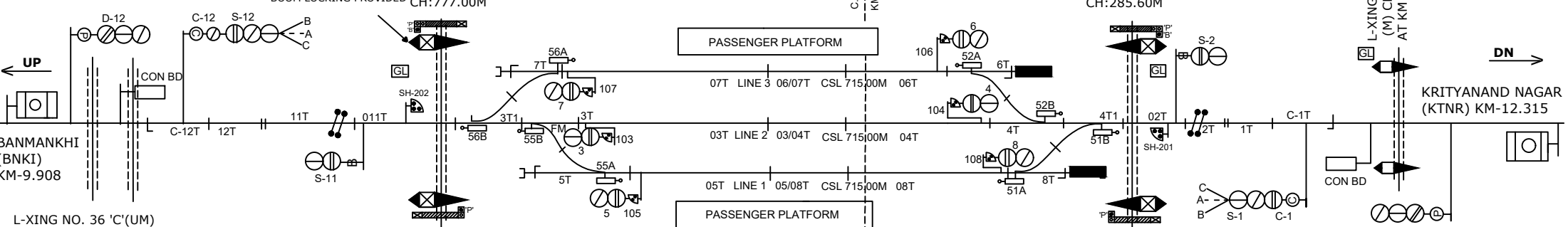
C.L. OF STATION BLDG OF SARSI(SRSI).  
KM 26/8-9 CH: 0.00M (FROM PRNA)

L-XING NO. 35 'C'(UM)  
AT KM 28/3-4  
CH: 1616.00M

INTERLOCKED  
L-XING NO. 34(M)'C'  
AT KM 27/2-3  
CH: 777.00M

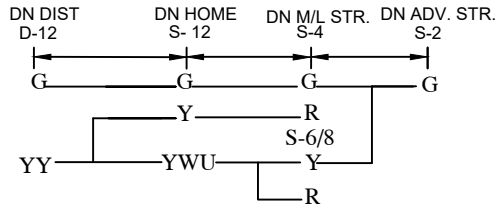
INTERLOCKED L-XING  
NO. 33(M)(T)'C'  
AT KM 26/1-2  
CH: 285.60M

L-XING NO. 32 'C'  
(M) CH: 992.00M  
AT KM 25/4-5

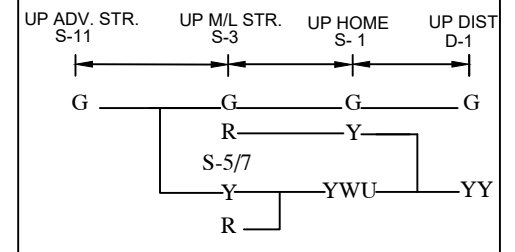


L-XING NO. 36 'C'(UM)  
AT KM 28/9-10  
CH: 2010.00M

DN ASPECT CONTROL CHART



UP ASPECT CONTROL CHART



NOTE:-

MAGNETO TELEPHONE PROVIDED BETWEEN PANEL ROOM L.C. GATE NO.24'C', 25'C', 26'C', 27'C', 30'C', 32'C' & 33'C' BETWEEN SRSI-KTNR AND 34'C', 35'C', 36'C' & 37'C' BETWEEN BNKI-SRSI.

CLASS OF STATION : B  
STD OF SIG & INTERLOCKING: STD-II ®

EAST CENTRAL RAILWAY  
SAMASTIPUR DIVISION

STATION WORKING RULE DIAGRAM  
MACL, STD-II® CLASS 'B'

SARSI

SWRD NO.-

DY.CSTE/CON/SPJ  
2015/(R.D)/05

SR.DSTE/SPJ

DSTE/SPJ

JE/DRG

TO SUIT SIP NO. ECR/SIP/SPJ/414/2015 ALT-V