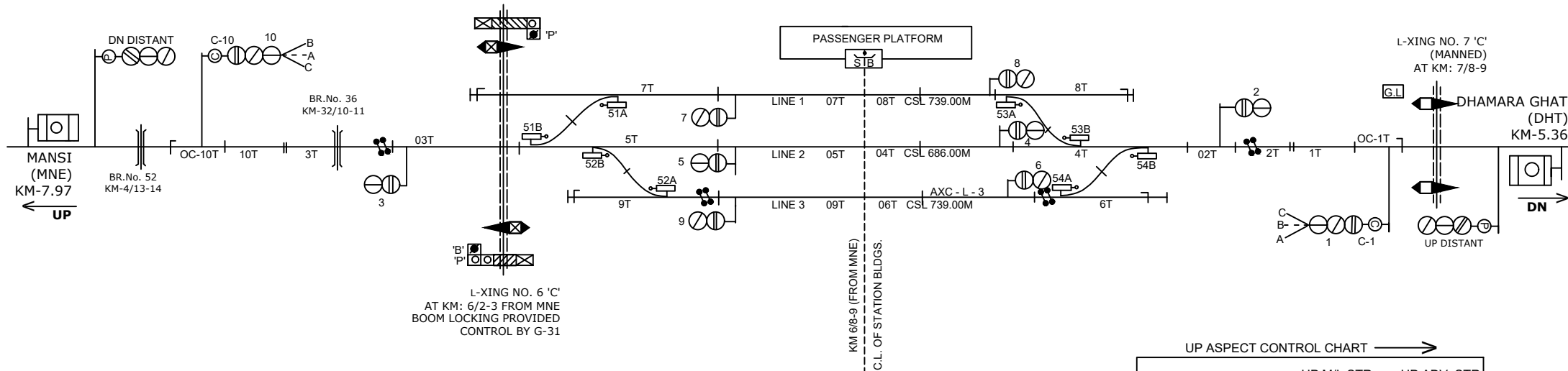
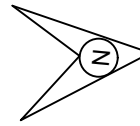


BADLAGHAT STATION

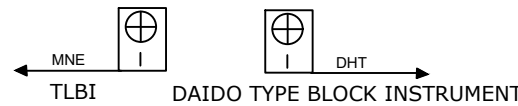
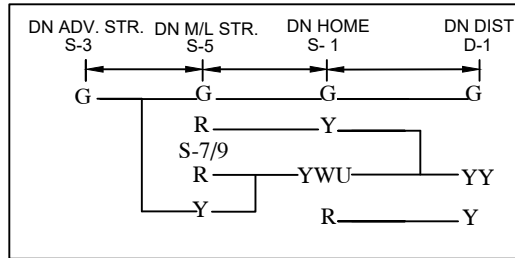
बदलाघाट स्टेशन



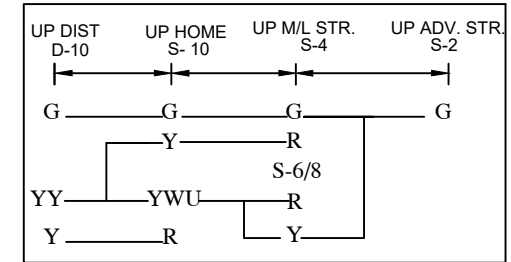
L-XING NO. 6 'C'
AT KM: 6/2-3 FROM MNE
BOOM LOCKING PROVIDED
CONTROL BY G-31

KM 6/8-9 (FROM MNE)
C.L. OF STATION BLDGS.

← DN ASPECT CONTROL CHART



UP ASPECT CONTROL CHART →



NOTE:
MAGNETO TELEPHONE PROVIDED BETWEEN PANEL CABIN & L.C.
GATE NO.: -4'C' BETWEEN BHB-MNE AND 6'C' & 7'C' BETWEEN
BHB-DHT.

CLASS OF STATION : B
STD OF SIG & INTERLOCKING: STD-II®

EAST CENTRAL RAILWAY
SAMASTIPUR DIVISION

STATION WORKING RULE DIAGRAM
MACL, STD-II®, CLASS 'B'

BADLAGHAT

SWRD NO.-

DSTE/W/SPJ/
2004/RD/44

SR.DSTE/SPJ DSTE/SPJ JE/DRG

TO SUIT SIP NO. ECR/SIP/SPJ/402/2006 ALT-VII