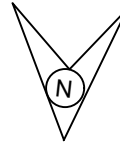


L.C NO.1 'B'



NEXT STN:-
OLAPUR
(5.81Km FROM
C/L OF L.C)

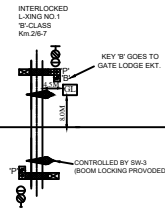
← UP



DN GATE DIST.



DN GATE SIG.



UP GATE SIG.



UP GATE DIST.



→ DN

NEXT BLOCK STN:
KHAGARIA
AT KM.123/0 FROM KIR
(4.25Km FROM
C/L OF L.C)



NOTE:-

- 1.MAGNETO TELEPHONE PROVIDED BETWEEN LC NO.1'SPL' AND OLAPUR.
- 2.LED SIGNAL LAMPS ARE USED.
- 3.DEAD APPROACH LOCKING PROVIDED AT LC GATE 1'B' WITH 60 SEC. TIME DELAY AS PER RL BOARD L.NO:-2000/SAFETY(A&R)/19/39/PT-II DT:-10.06.2014.
4. SLIDING BOOM PROVIDED AT L.C NO.1'B'.
5. ROAD SIGNAL SHALL DISPLAY RED ASPECT WHEN SLIDING BOOM IS USED TO CLOSED THE ROAD TRAFFIC.
6. TO SUIT 25KV AC TRACTION.

EAST CENTRAL RAILWAY SAMASTIPUR DIVISION				STATION WORKING RULE DIAGRAM OF L-XING No.1 'B' BETWEEN OLAPUR-KHAGARIA AT KM 2/6-7	NOT TO SCALE SWRD NO. SR./DSTE/SPJ 2018(RD)/16
				SR.DSTE/SPJ	DSTE/SPJ