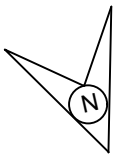


BAJPATTI STATION

ckt i Vh LVs'ku

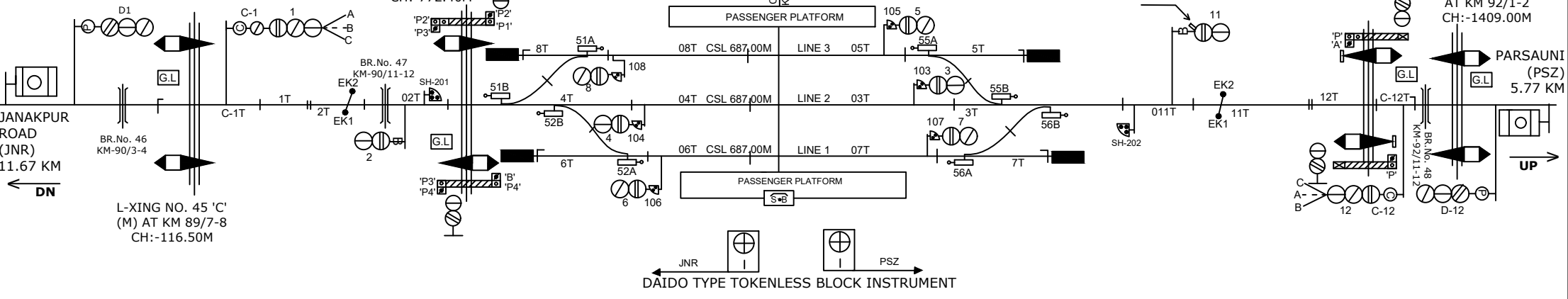


INTERLOCKED
L-XING NO. 46 'C'
AT KM 89/9-90/0
CH:-772.40M

C.L. OF STATION BLDGS.
KM 90/8 (FROM SPJ)

L-XING NO. 47 'A'
(M) AT KM 91/3-4
CH:-584.70M

L-XING NO. 48 'C'(M)
AT KM 92/1-2
CH:-1409.00M

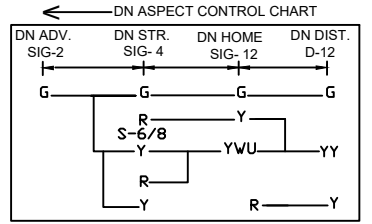
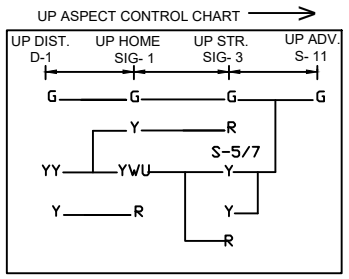


JANAKPUR ROAD (JNR) 11.67 KM
DN

L-XING NO. 45 'C'
(M) AT KM 89/7-8
CH:-116.50M

UP

JNR PSZ
DAIDO TYPE TOKENLESS BLOCK INSTRUMENT



NOTE:-
MAGNETO TELEPHONE PROVIDED BETWEEN PANEL GATE NO. 42'C', 43, 44'C' 45'C' & 46'C' BETWEEN JNR-BJT AND ,47'C' & 48'C' BETWEEN BJT-PSZ.

CLASS OF STATION : B
STD OF SIG & INTERLOCKING: STD-II (R)

EAST CENTRAL RAILWAY SAMASTIPUR DIVISION	SR.DSTE/SPJ	DSTE/SPJ	JE/DRG	STATION WORKING RULE DIAGRAM MACL, STD-II (R), CLASS 'B'	BAJPATTI	SWRD NO.-
						SR.DSTE/C-I/SPJ 2020/RD/01
TO SUIT SIP NO. ECR/SIP/SPJ/366/2008 ALT-XI						