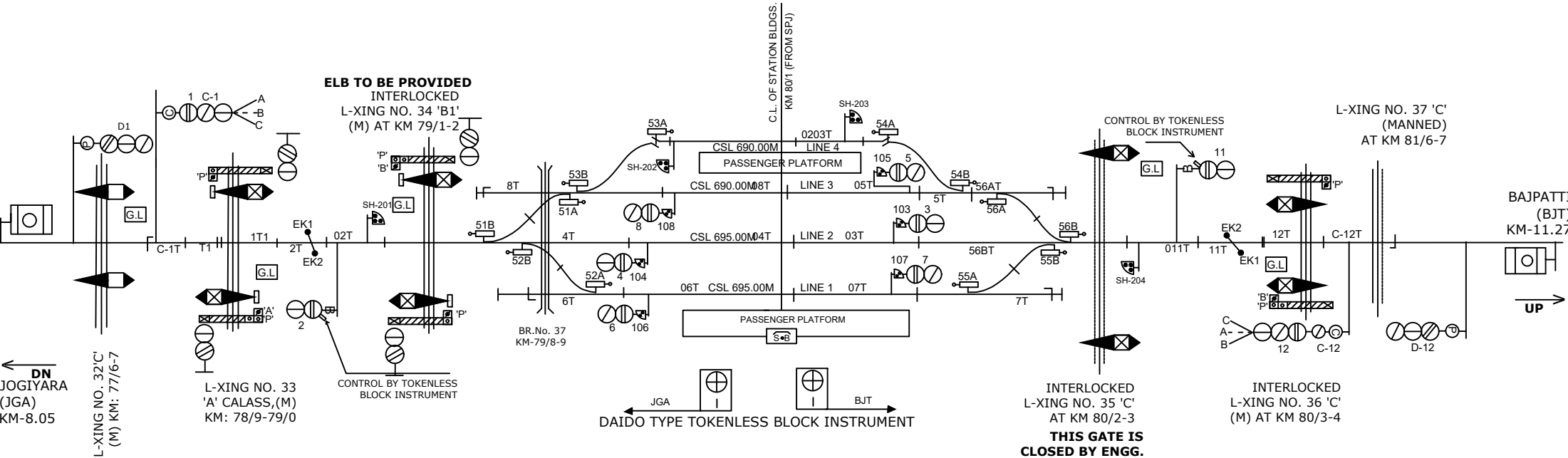


# JANAKPUR ROAD STATION

tudi jkm LV's ku



DN  
JOGIYARA  
(JGA)  
KM-8.05

L-XING NO. 33  
'A' CALASS,(M)  
KM: 78/9-79/0

JGA BJT  
DAIDO TYPE TOKENLESS BLOCK INSTRUMENT

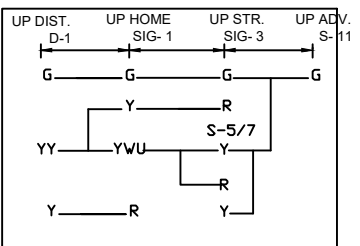
INTERLOCKED  
L-XING NO. 35 'C'  
AT KM 80/2-3  
**THIS GATE IS  
CLOSED BY ENGG.  
& CIRCUITRY IN  
OPEN CONDITION.**

INTERLOCKED  
L-XING NO. 36 'C'  
(M) AT KM 80/3-4

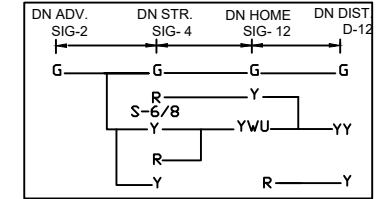
L-XING NO. 37 'C'  
(MANNED)  
AT KM 81/6-7

BAJPATTI  
(BJT)  
KM-11.27  
UP

UP ASPECT CONTROL CHART



DN ASPECT CONTROL CHART



NOTE:-  
MAGNETO TELEPHONE PROVIDED BETWEEN PANEL GATE NO. 31'C, 32'C, 33'C, 34'C  
BETWEEN JGA-JNR AND 35'C, 36'C,37'C,38'C,39'C & 40'C BETWEEN JNR-BJT.

CLASS OF STATION : B  
STD OF SIG & INTERLOCKING: STD-II ®

EAST CENTRAL RAILWAY SAMASTIPUR DIVISION	SR.DSTE/SPJ	DSTE/SPJ	JE/DRG	STATION WORKING RULE DIAGRAM MACL, STD-II® CLASS 'B'	JANAKPUR ROAD	SWRD NO.-
				TO SUIT SIP NO. ECR/SIP/SPJ/367/2008 ALT-X		Sr.DSTE/SPJ 2019/RD/11