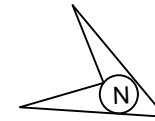


PANDAUL STATION

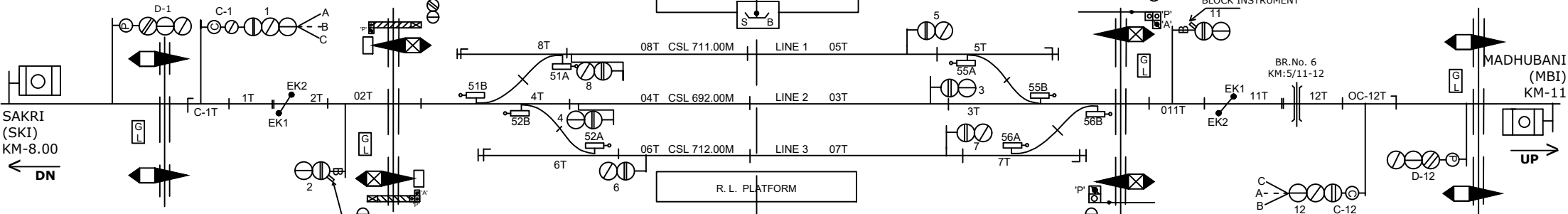
i UMksy LV's ku



ELB TO BE PROVIDED

INTERLOCKED
L-XING NO. 6
'SPL' CLASS
AT KM.7/3-4
CH:-517.81M

L-XING NO. 7A
'C' CLASS
AT KM 9/6-7
CH:-1815.49M



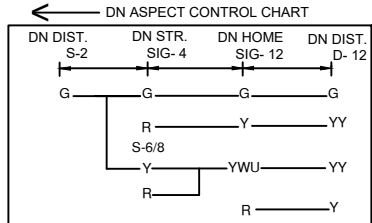
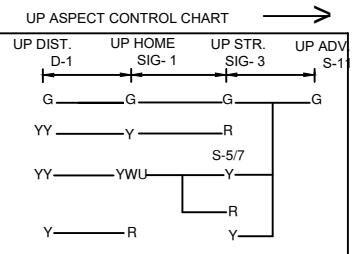
SAKRI (SKI)
KM-8.00
← DN

L-XING NO. 5
'C'-CLASS
AT KM 6/5-6
CH:-1365.87M

CONTROL BY TOKENLESS
BLOCK INSTRUMENT

← SKI MBI →
DAIDO TYPE TOKENLESS BLOCK INSTRUMENT

INTERLOCKED
L-XING NO. 7
'C' CLASS
AT KM 8/3-4
CH:-520.34M



NOTE:-
MAGNETO TELEPHONE CONNECTED PROVIDED BETWEEN PANEL ROOM, LC.GATE - 3'C, 5'C, 6'C
BETWEEN SKI-PDW AND 7'C, 7'AC' & 8 BETWEEN PDW-MBI.

CLASS OF STATION : B
STD OF SIG & INTERLOCKING: STD-II®

EAST CENTRAL RAILWAY SAMASTIPUR DIVISION	SR.DSTE/SPJ	DSTE/SPJ	JE/DRG	STATION WORKING RULE DIAGRAM MACL, STD-III, CLASS 'B'	PANDAUL	SWRD NO.-
				TO SUIT SIP NO. ECR/SIP/SPJ/380/2007 ALT-VI		SR.DSTE/SPJ 2020/RD/04