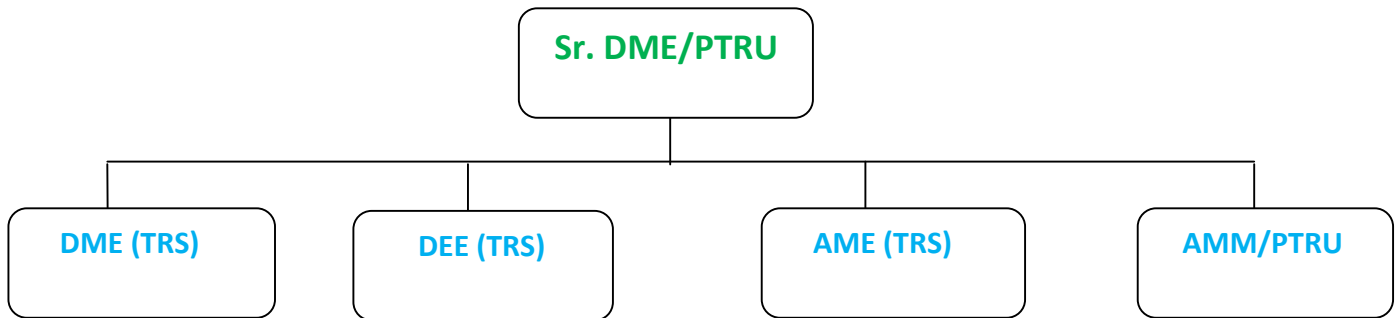


DIESEL LOCOMOTIVE SHED, PATRATU

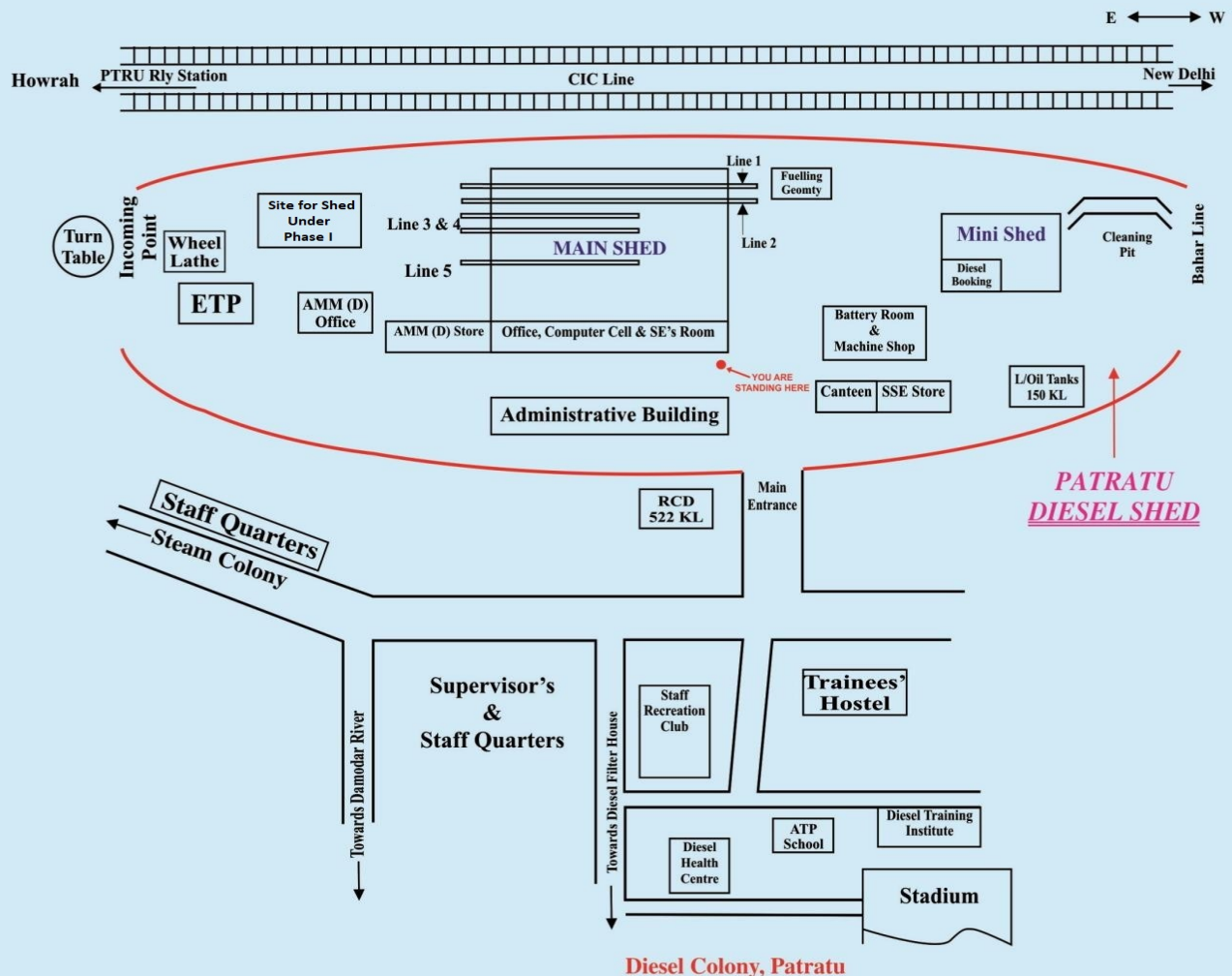
Diesel Locomotive Shed, Patratu came into existence in 1962 with transfer of 35 WDM1 Locomotive (earlier based at GAYA). At present total holding of this shed is 216 with breakup of Diesel Locomotives 36-WDG4, 43-WDG4D, 05-WDS6R and Electric Locomotives 132 (WAG9-05, WAG9H-22 and WAG9HC-105).

ORGANIZATION

Sr.DME/PTRU Loco Shed is overall in charge of Shed, And assisted by four officers {01 DME (TRS), 01 DEE(TRS), 01 AME(TRS) and 01 AMM/PTRU}.



MAP OF DIESEL SHED AND DIESEL COLONY



SUMMARY OF STAFF POSITION

Sl.No.	Category	Sanction	On roll	Vacancy
1	Officers	08	05	03
2	Supervisors	56	44	12
3	Artisan Mech.	175	152	23
4	Artisan Elect.	116	63	53
	Artisan Elect./TRS	00	18	-18
5	Ancillary Gr. 'C'	34	21	13
6	Misc. Gr. 'C'	04	03	01
7	Unskilled Gr. 'D'	47	48	-01
8	Staff at CPU	05	03	02
9	Ancillary Gr. 'D'	01	00	01
10	Lab.Staff	09	04	05
11	Ministerial Gr. 'C'	08	03	05
12	Ministerial Gr. 'D'	01	03	-02
13	Diesel Training Institute+ Trainee's Hostel	07	03	04
	Sub-Total	471	370	101

Holding of Diesel Loco Shed, Patratu

	Sl.No.	Type of Loco	Population
Diesel Loco	01	WDG4	36
	02	WDG4D	43
	03	WDS6R	05
	Total (A)		84
Electric Loco	01	WAG9	05
	02	WAG9H	22
	03	WAG9HC	105
	Total (B)		132
	Total (A+B)		216

Diesel Shed activities

Patratu Diesel Shed is a Major Loco Shed of Dhanbad Division having holding more than 200 locos. Schedule of HHP Loco, Alco Loco and Electric Loco is being done. 02 staff are provided at CPU for attending the problem of Diesel Loco and Electric Loco. 01 RCD is available at Diesel Shed Patratu for fueling in Diesel Loco. Capacity of RCD is 452 KL.

ACHIEVEMENTS

1) Commissioning of New CNC under Floor wheel lathe at Diesel Locomotive Shed/PTRU:-

Loco detention in Shed on account of wheel turning will be eliminated as a new CNC under floor wheel lathe machine for wheel turning has been commissioned on 01.03.2024 and now it's working successfully and being properly utilized.

Particulars of this machine are as under:-

Description - CNC under floor wheel lathe Model No. NFUF-221 (YUL-08M)

Specification - COFMOW/IR/CNC-UFWL(BG)/WITH WORKS/2019

Manufacturer's Address – M/s HYT Engg. Co. Pvt. Ltd.

Unit 1:29/10/1, 29/10/2, D-2 Block MIDC, Chinchwad, Pune-411019

2) AMC of TCC and LCC for M/s Siemens and M/s Medha propulsion and control system also REMLOT of M/s Medha started:-

AMC of TCC and LCC for M/s Siemens and M/s Medha propulsion and control system also REMLOT of M/s Medha started this year. LOA for AMC was issued to M/s Siemens on 01/11/2023 and work started on 15/11/2023. LOA for AMC of TCC, LCC and REMLOT was issued to M/s Medha Servo drive on 06/03/2024 and work started from 11/03/2024. LOA for AMC of TCC and LCC to M/s EMD has been issued and work started from 01.06.24.

3) All ALCO loco except shunting, Condemned:-

Now, there is no ALCO Loco other than shunting is available in this shed. In this year Total 11 ALCO Diesel Locos were condemned. All these locos are under auction and disposal by Sr. DMM/DHN.

4) Overhauling of Assemblies fitted in HHP Locomotives:-

Total 105 numbers Mechanical Unit Injector (MUI) Assembly and 103 numbers of Power assemblies were overhauled in-house and were fitted in HHP locos, within last four months.

Achievement of Scrap Disposal in 2023-24.

Sl.No.	Disposed Scrap	Weight	Remark
1	Total Scrap	325.18MT	Disposed

RTI Cell Contact information

Contact Person- Sri Krishna Hembram

Designation. - Sr. Clerk cum Typist

Contact No. : - 9771426499

Address

Office of Sr. DME/PTRU LOCO SHED

Loco Shed Patratu ,P.O-Patratu

Dist.-Ramgarh Jharkhand

Pin-829118